



ALLMARK DOOR
All Doors. All Docks. All Service. All the Time.

**Secure What
*Matters Most.***

Loading Dock Equipment

Your Trusted Door Partner.

Allmark Door is a trusted industrial door partner focused on helping industry leaders keep facility operations in full-swing all-year-round.

When partnering with us you not only get high performance door and dock equipment—guaranteed to exceed the most rigorous safety standards—we also deliver turnkey solutions that make planning, implementing and maintaining your equipment needs simple!



Content

1.0 Safer Shipments And Departures

1.1 High-Efficiency Cargo-Handling

2.0 Loading Dock Equipment

- 2.1 Hydraulic Levelers
- 2.2 Mechanical Levelers
- 2.3 Vertical Storing Levelers

- 2.4 Hydraulic Vehicle Restraints
- 2.5 Electric Vehicle Restraints

- 2.6 Automatic Controls

- 2.7 Dock Seals
- 2.8 Dock Shelters
- 2.9 Trailer Top Seals

3.0 Industries

- Food & Beverage
- Pharmaceutical
- Utilities
- Logistics & Distribution
- Heavy Industry
- Transportation

1.0 Safer Shipments And Departures



Compliant with American National Standards Institute (ANSI) performance specifications.



Rated in accordance with National Electrical Manufacturer's Association (NEMA) standards.



LEED certified by the U.S. Green Building Council (USGBC), for sustainably sourced-components.



In adherence with Good Manufacturing Practices (GMP) guidelines.



1.1 High-Efficiency Cargo-Handling



Food and beverage loading dock environments



Pharmaceutical loading dock environments



Logistics and distribution loading dock environments



Courier loading dock environments



Manufacturing loading dock environments



2.1 Loading Dock Equipment

HYDRAULIC LEVELER

Key Features

- Hydraulic Deck and Lip Cylinders
- 8-10 Enhanced J-Beam Channels
- Hydraulic Velocity Fuse
- One-Piece Dock Strut
- NEMA 4X Push-Button Control Station

Major Benefits

- Reliable Safety:**
Advanced safety features, including velocity fuse, dock strut and toe guards, prevent accidents during maintenance and deployment.
- Advanced Efficiency:**
Automatic controls and hydraulic operation eliminate the need for manual deployment, increasing productivity at the touch of a button.
- Proven Security:**
Strategically welded steel beams and one-piece headboard construction supports a load usage of up to 40,000 lb.



HYDRAULIC LEVELER


PRODUCT OVERVIEW


✓ Get A Quote Now!

General Specifications

TOTAL LOAD

LOAD WEIGHT + VEHICLE WEIGHT

 ≤ 5MPH

 ≤ 7% DECK GRADE

DAILY USAGE

FULL TRUCK (FTL) / CYCLES

FULL TRUCK (FTL)	CYCLES
0-8	0-200
9-16	201-400
17-24	401-600
≥ 24	≥ 600

Full truck = 24-26 pallets

LOAD CLASS

LOAD + USAGE

WORKHORSE

HEAVY

SUPER

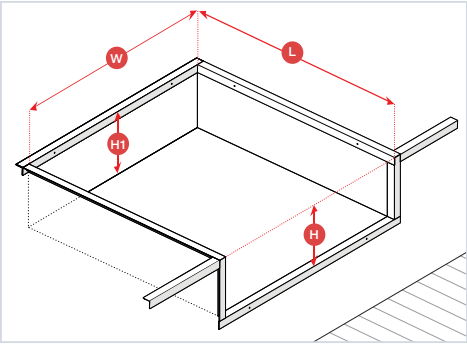
EXTREME

ULTRA

LOAD USAGE

MAX 44,000 LB

To determine your optimal loading dock solution, contact a AllmarkDoor sales representative with your total load and daily usage data.



NOMINAL SIZE		PIT WIDTH W		PIT LENGTH L	
		in	mm	in	mm
6' x 6'	1829 x 1829mm	74	1880	63	1600
6' x 8'	1829 x 2438mm			87	2210
6' x 10'	1829 x 3048mm			111	2819
6' 6" x 6'	1981 x 1829mm	80	2032	63	1600
6' 6" x 8'	1981 x 2438mm			87	2210
6' 6" x 10'	1981 x 3048mm			111	2819
7' x 6'	2133 x 1829mm	85	2159	63	1600
7' x 8'	2133 x 2438mm			87	2210
7' x 10'	2133 x 3048mm			111	2819
Standard Pit Depth: Front H : 20" (508mm) Rear H : 19.5 (495mm)					

Options

- Lip Length 16" (406 mm) Standard 18" (457 mm) or 20" (508 mm)
- No-Shim™ dock frame
- Energy Seal Plus™
- Biodegradable oil, Arctic oil
- Blue Genius™ Touch Control Panel
- Assured Motion Float (floating rear hinge)
- Remote Powerpack
- DLB (Dock Lip Barrier)
- Closed Pit Dock Frame
- Grease Fitting on Lip Tube

Product Overview



Easy To Operate



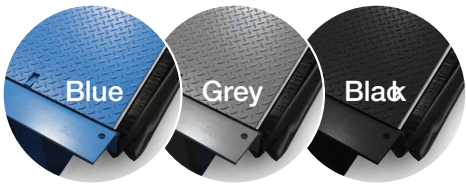
Structural Integrity



Deck Flex Advantage



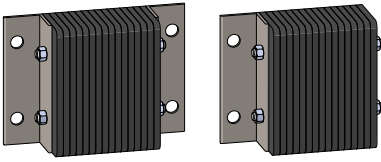
Colors



Optional Bumper

Dual Flange

Single Flange



2.2

Loading Dock Equipment

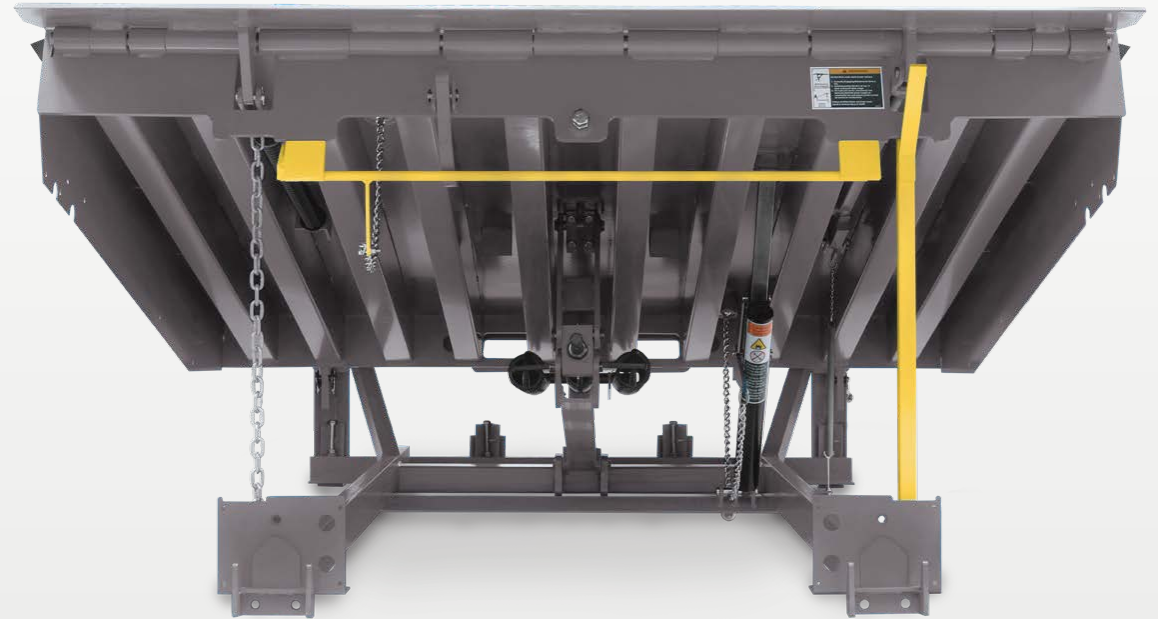
MECHANICAL LEVELER

Key Features

- Ratchet Hold-Down Assembly
- 8-10 Enhanced J-Beam Channels
- Mechanical Fall-Safe Legs
- One-Piece Dock Strut
- Robust Welded Pull-Chain

Major Benefits

- **Reliable Performance:**
Ratchet hold-down system delivers secure transitions throughout the dock operating range without tension overload.
- **Simple Functionality:**
Easy-to-perform pull-chain release reduces pull force and deploys deck in a smooth, controlled fashion.
- **Proven Security:**
Strategically welded steel beams and one-piece headboard construction supports a load usage of up to 40,000 lb.



MECHANICAL LEVELER


PRODUCT OVERVIEW


Get A Quote Now!

General Specifications

TOTAL LOAD

LOAD WEIGHT + VEHICLE WEIGHT

 ≤ 5MPH

 ≤ 7% DECK GRADE

DAILY USAGE

FULL TRUCK (FTL) / CYCLES

FULL TRUCK (FTL)	CYCLES
0-8	0-200
9-16	201-400
17-24	401-600
≥ 24	≥ 600

Full truck = 24-26 pallets

LOAD CLASS

LOAD + USAGE

WORKHORSE

HEAVY

SUPER

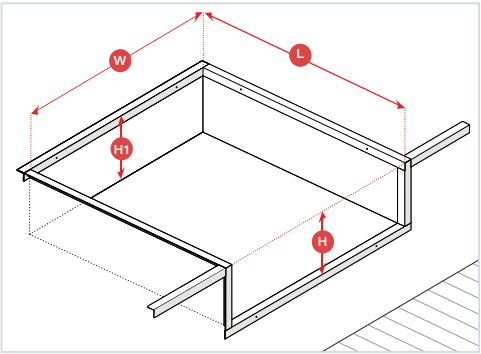
EXTREME

ULTRA

LOAD USAGE

MAX 40,000 LB

To determine your optimal loading dock solution, contact a AllmarkDoor sales representative with your total load and daily usage data.



NOMINAL SIZE		PIT WIDTH W		PIT LENGTH L	
		in	mm	in	mm
6' x 6'	1829 x 1829mm	74	1880	63	1600
6' x 8'	1829 x 2438mm			87	2210
6' x 10'	1829 x 3048mm			111	2819
6' 6" x 6"	1981 x 1829mm	80	2032	63	1600
6' 6" x 8"	1981 x 2438mm			87	2210
6' 6" x 10"	1981 x 3048mm			111	2819
7' x 6'	2133 x 1829mm	85	2159	63	1600
7' x 8'	2133 x 2438mm			87	2210
7' x 10'	2133 x 3048mm			111	2819
Standard Pit Depth:		Front H : 20" (508mm)		Rear H1 : 19.5 (495mm)	

Product Overview



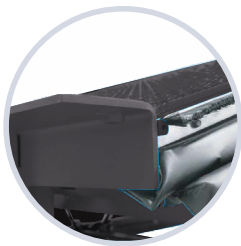
Easy To Operate



Structural Integrity



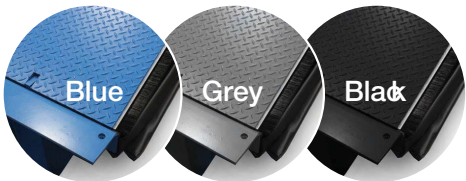
Deck Flex Advantage



Options

- Lip Length 16" (406 mm) Standard
- 18" (457 mm) or 20" (508 mm)
- No-Shim™ dock frame
- Energy Seal Plus™
- EasyPull™
- Side and Rear Weather Seal
- Full Range Toe Guards
- Closed Pit Dock Frame
- Grease Fitting on Lip Tube

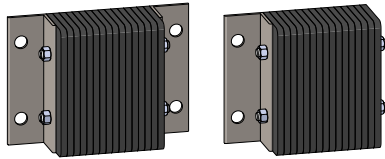
Colors



Optional Bumper

Dual Flange

Single Flange



VERTICAL STORING LEVELER

Key Features

- Nylon-Reinforced Vinyl or Polyurethane Curtain
- Galvanized or Stainless Steel Hood and Guide Tracks
- Direct-Drive Panel Operation
- Touchless Sensor Activation
- NEMA 4X Control Station

Major Benefits

- **Advanced Performance:**
Vertical position allows overhead doors to close completely, maintaining internal temperatures and ensuring safe, sanitary conditions.
- **Reliable Efficiency:**
State-of-the-art sensor technology, hydraulic features, and automated controls deliver smooth operational precision.
- **Proven Security:**
Unique deck hinge, advanced safety capabilities, and strategically welded construction supports a load usage of up to 33,000 lb.




VERTICAL STORING LEVELER


PRODUCT OVERVIEW

✓ Get A Quote Now!

General Specifications

TOTAL LOAD
LOAD WEIGHT + VEHICLE WEIGHT

 ≤ 5MPH

 ≤ 7% DECK GRADE

>

DAILY USAGE
FULL TRUCK (FTL) / CYCLES

FULL TRUCK (FTL)	CYCLES
0-8	0-200
9-16	201-400
17-24	401-600
≥ 24	≥ 600

Full truck = 24-26 pallets

>

LOAD CLASS
LOAD + USAGE

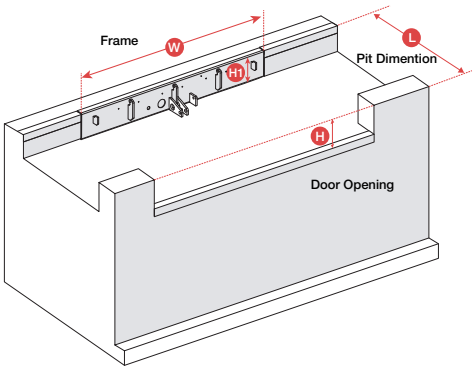
HEAVY

SUPER

EXTREME

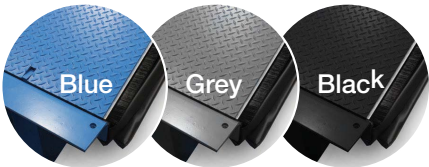
LOAD USAGE
UP TO 33,000 LB
For additional capacities, please contact Blue Giant

ANSI MH30.1 tested & certified

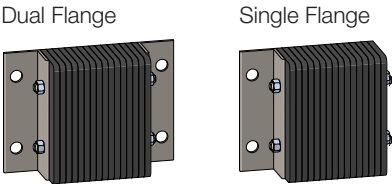


NOMINAL SIZE		FRAME WIDTH W		PIT LENGTH L	
		in	mm	in	mm
6' x 6'	1829 x 1829mm	81	2057	57.5	1461
6' x 8'	1829 x 2438mm			81.5	2070
6' 6" x 6'	1981 x 1829mm	87	2210	57.5	1461
6' 6" x 8'	1981 x 2438mm			81.5	2070
7' x 6'	2133 x 1829mm	92	2337	81.5	1461
7' x 8'	2133 x 2438mm			57.5	2070
Standard Pit Depth: 18", 20" (457, 508mm)					
Standard Pit Depth:		Front H : 12.5" (318mm)		Rear H : 12" (305mm)	
Optional Pit Depth:		Front H : 15.5" (394mm)		Rear H : 15" (381mm)	

Colors



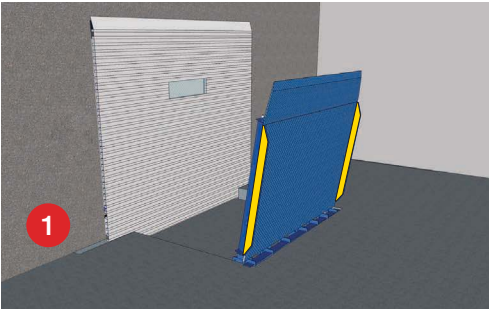
Optional Bumper



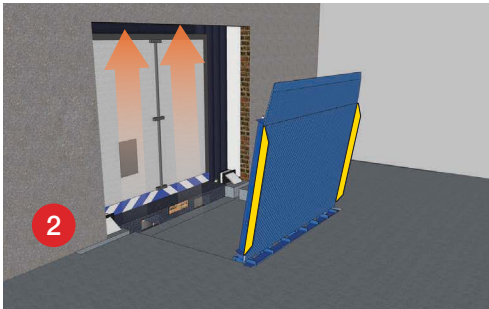
Options

- Up to 20" lip. Longer options available upon request.
- Advanced lights communication package
- Extreme Arctic oil
- Draft Pad

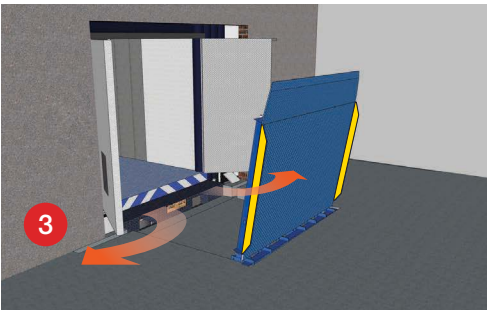
Product Overview



Vertically stored over-center, allowing the overhead door to remain closed, providing a tight seal.



Trailer doors can remain closed and truck driver does not need to get out of the cab.



Dock attendant opens the trailer doors inside of the building and lowers the leveler into position.



Loading and unloading process takes place like a standard pit-mounted leveler.

HYDRAULIC VEHICLE RESTRAINT

Key Features

- Zinc-Plated Steel Housing
- Hydraulic Barrier Arm
- Double-Acting Hydraulic Cylinders
- Intelligent Positioning System Sensor
- Automatic Touch Control Panel

Major Benefits

- **Proven Safety:**
Barrier-style restraint with 35,000 pounds of restraining force safeguards against vertical and horizontal trailer movement.
- **Advanced Performance:**
Intelligent positioning system (IPS) does not require the use of mechanical switches and sensors to detect ICC bar.
- **Low Maintenance:**
Mechanical lock takes pressure away from hydraulic system, resulting in less wear-and-tear damage and lower lifetime ownership cost.



HYDRAULIC VEHICLE RESTRAINT

PRODUCT OVERVIEW

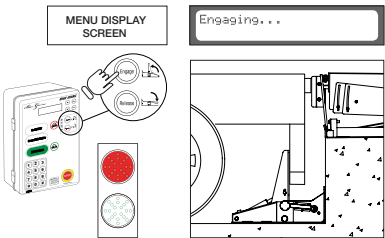
Get A Quote Now!

General Specifications

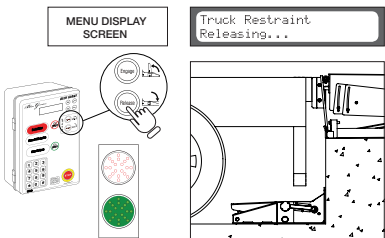
Engagement Range	8" (203mm) to 26" (660mm) above ground
Structure	5/16" (8mm) high-strength abrasion-resistant steel
Coating	Zinc-plated carriage, yellow zinc-plated rotating-resistant steel
Hydraulic Cylinder	Performs fully even during wet or flooded conditions
Holding Force	Excess of 35,000 lbs (15,909kgs)
Power Supply	115/230/400/460 V 1/3 P
Options	<ul style="list-style-type: none">• Cantilever Mounting Bracket• Open-Dock Stanchion for Control Box• Driveway Plate for Ground Mounting• Green Light Interlock

Product Overview

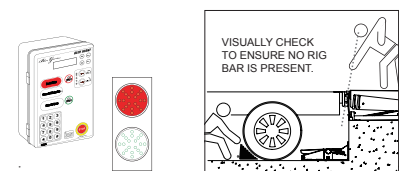
1) Engage Restraint



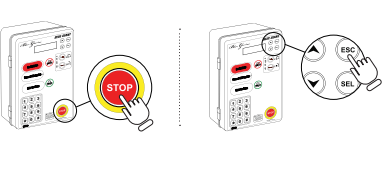
2) Disengage Restraint



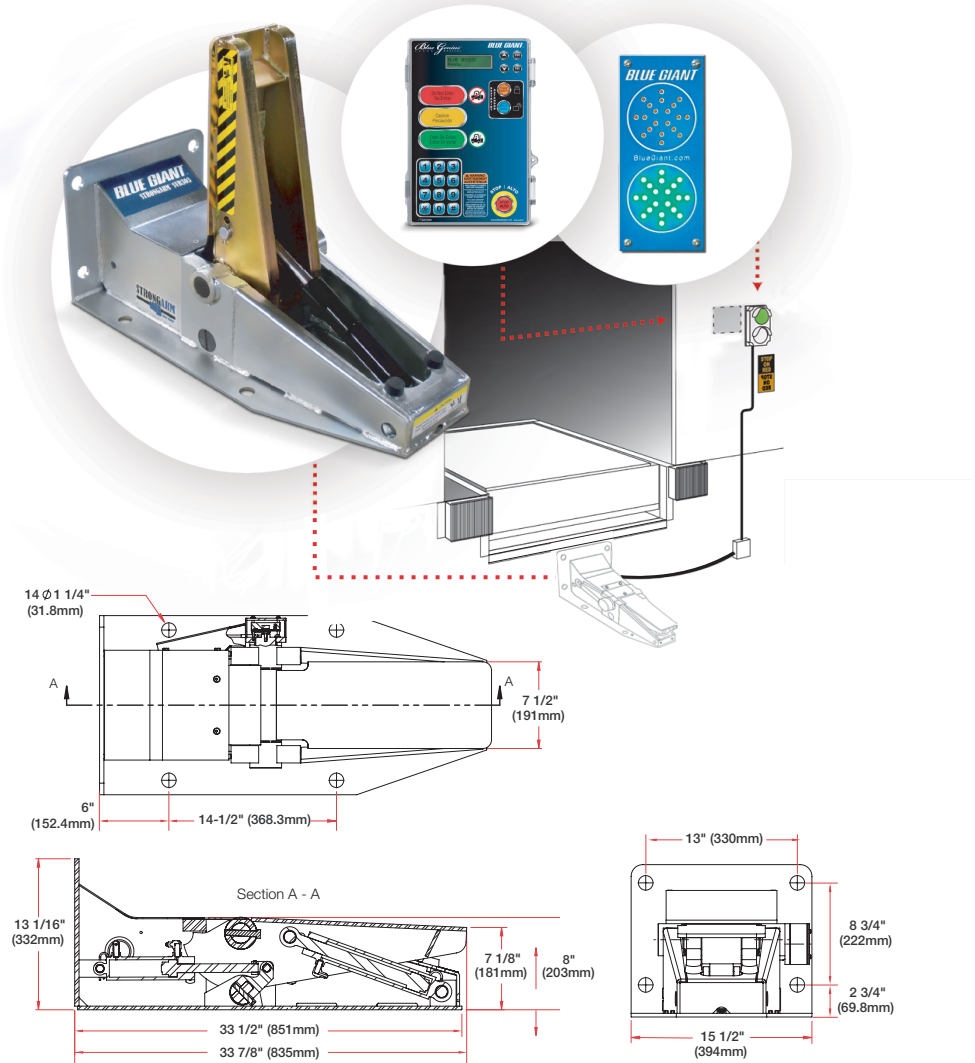
3) Vehicle Restraint Override



4) Stop Procedure



Technical Drawing



ELECTRIC VEHICLE RESTRAINT

Key Features

- Zinc-Plated Steel Housing
- Electromechanical Hook
- IP67-Rated Submersible Motor
- Steel ICC Bar Guide
- Automatic Touch Control Panel

Major Benefits

- **Proven Safety:**
Hook-style restraint arm with 32,000 pounds of restraining force safeguards against vertical and horizontal trailer movement.
- **Reliable Convenience:**
Wall-mounted design provides an ideal solution for loading dock locations that don't support ground mounting.
- **Energy Efficiency:**
Electric operation ensures low operating costs and an environmentally sustainable alternative to hydraulic systems.



ELECTRIC VEHICLE RESTRAINT

PRODUCT OVERVIEW

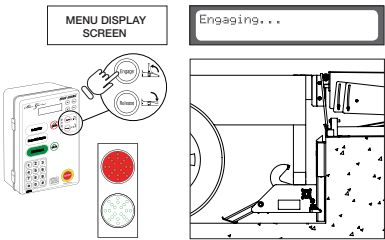
✓ Get A Quote Now!

General Specifications

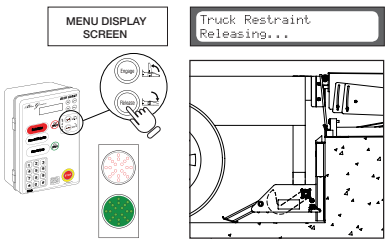
Engagement Range	9" (229mm) to 27" (686mm) above ground
Structure	5/16" (8mm) high-strength abrasion-resistant steel
Coating	Zinc-plated carriage, yellow zinc-plated rotating-resistant steel
Holding Force	Excess of 32,000 lbs (15,875kgs)
Power Supply	110/115 volt single phase, 15 AMP service circuit
Options	<ul style="list-style-type: none">• Cantilever Mounting Bracket• Open-Dock Stanchion for Control Box• Driveway Plate for Ground Mounting• Green Light Interlock

Product Overview

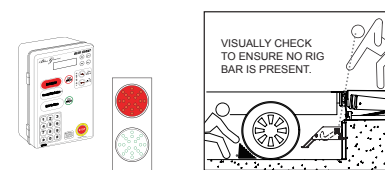
1) Engage Restraint



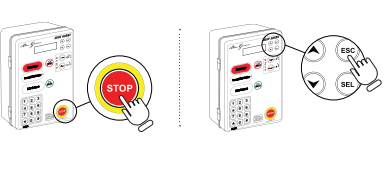
2) Disengage Restraint



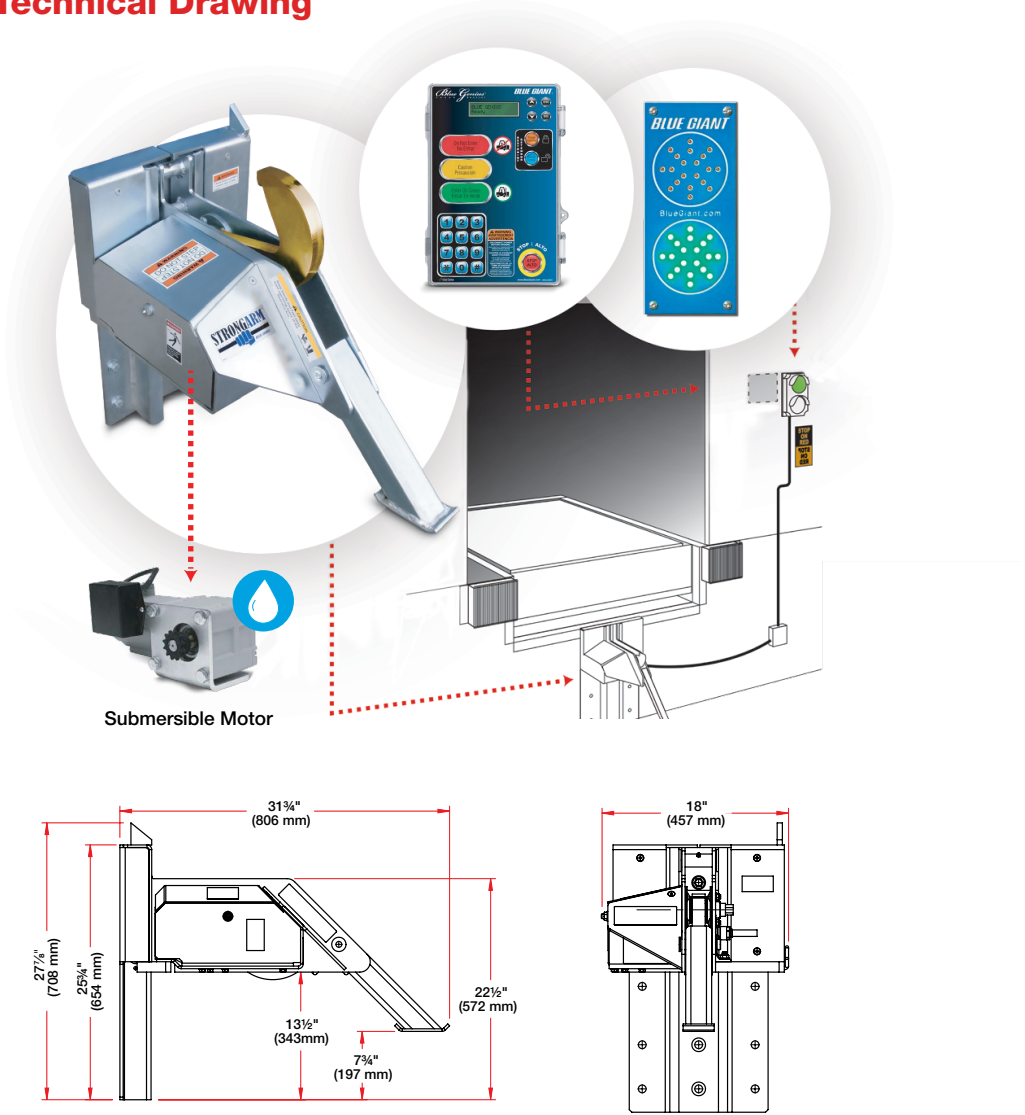
3) Vehicle Restraint Override



4) Stop Procedure



Technical Drawing



CONTROL STATION

Key Features

- User-Friendly LCD Screen
- Intelligent Programmable Menu
- NEMA 4X Polycarbonate Enclosure
- Automatic Stop Button and Audible Alarm
- Interior and Exterior Communication Lighting

Major Benefits

- **Reliable Safety:**
Intelligent programming ensures all operational sequences are deployed in accordance with personalized security protocols.
- **Superior Functionality:**
User-friendly LCD screen with audible touch buttons and numeric keypad execute desired commands instantly.
- **Proven Durability:**
NEMA 4X polycarbonate control panel enclosure effectively resists corrosion in washdown and harsh environments.



CONTROL STATION

PRODUCT OVERVIEW

Get A Quote Now!

Standalone



Gold Series I



Gold Series II

Combination



Gold Series III



Platinum Series

Features

	Gold Series I	Gold Series II	Gold Series III	Platinum Series	
Operates dock leveler	Standard	—	Standard	Standard	
Operates vehicle restraint	—	Standard	Standard	Standard	
Combination controls	—	—	Standard	Standard	
Communication package (traffic lights)	Optional ^f	Standard	Standard	Standard	
Operates overhead door	Optional	Optional	Optional	Standard	
Door interlock provision	Standard	—	Standard	Standard	
Operates inflatable seal	Optional [*]	Optional [*]	Optional [*]	Optional [*]	◇
Operates dock light	Optional [*]	Optional [*]	Optional [*]	Optional [*]	◇
Personalized security features	Optional	Optional	Optional	Standard	
Rotary disconnect, integral fused	Optional ^{**}	Optional ^{**}	Optional ^{**}	Standard	
Duplex receptacle, 115 VAC, NEMA 5-15	—	—	—	Optional [*]	◇
LCD display: Operator troubleshooting	Standard	Standard	Standard	Standard	
Trilingual LCD display text	—	—	—	Standard	

DOCK SEALS

Key Features

- Premium-Grade Polyurethane Foam Pads
- Premium High-Tear Resistant Fabrics
- Tough Wear Pleats and Guide Stripes
- Heavy-Duty Wood Mounting Base
- Galvanized Steel Mounting Hardware

Major Benefits

- **Proven Performance:**
Laboratory-tested fabrics and tight-sealing properties provide environmental protection against weather elements and contamination.
- **Reliable Safety:**
High-visibility yellow guide stripes ensure proper trailer alignment with loading dock door, reducing potential accidents.
- **Advanced Durability:**
High-cycle construction and tough wear pleats extend product life under the most rigorous conditions.



DOCK SEALS

PRODUCT OVERVIEW

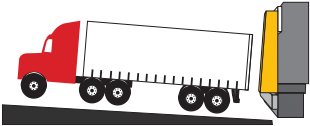
✓ Get A Quote Now!

General Specifications

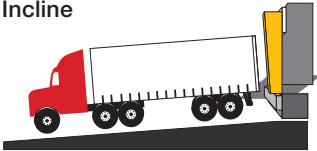
Sizes	8'W x 8'H 8'W x 9'H 8'W x 10'H
Vertical Length	8' / 9' / 10'
Common Options	18" Header 12" Drop Curtain Curtain Style Header
Durability Options	22 / 40 oz Vinyl 16 / 40 oz Hypalon 16 / 40 oz Neoprene Hight-Tear Resistant
Warranty	1-year guarantee against manufacturing defects in material and workmanship from date of installation.

Options

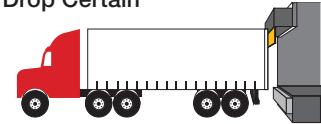
Decline



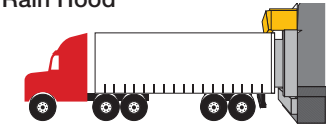
Incline



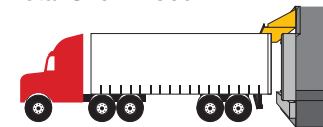
Drop Certain



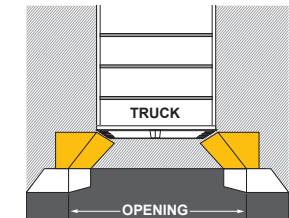
Rain Hood



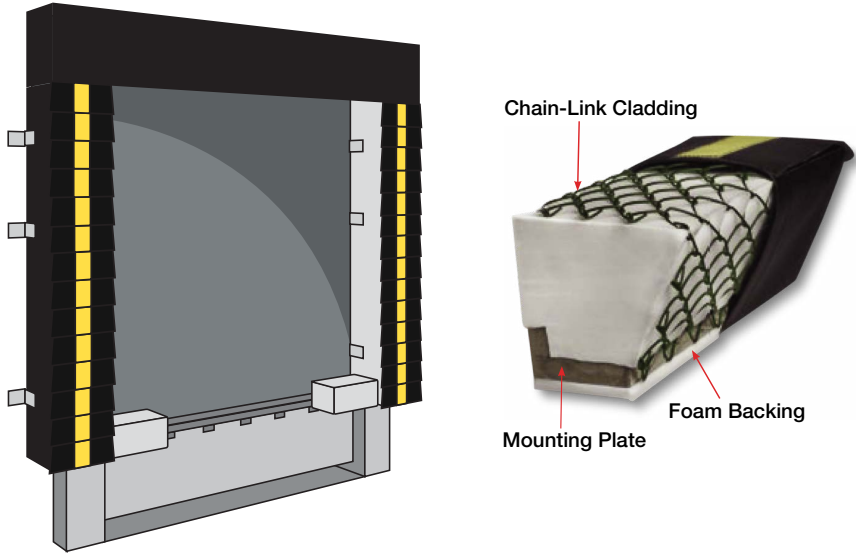
Metal Snow Hood



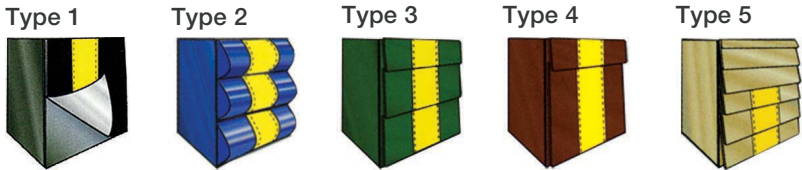
Beveled Side Pads



Technical Drawing



Optional Contact Face



Colors

Pads			Guide Stripes	
Black	Blue	Green	Yellow	Orange
Brown	Tan			

DOCK SHELTERS

Key Features

- Fiberglass-Reinforced Head Curtain Assembly
- Premium-Grade Polyurethane Foam Pads
- Premium High-Tear Resistant Fabrics
- Heavy-Duty Wood Mounting Base
- Galvanized Steel Mounting Hardware

Major Benefits

- **Reliable Performance:**
Laboratory-tested fabrics and tight-sealing properties provide environmental protection against weather elements and contamination.
- **Proven Functionality:**
Vinyl-covered high-density foam eliminates the need for steel protective bumpers and enhances shelter durability.
- **Low Maintenance:**
High-cycle construction, free of mechanical or adjustable parts, prevents complications that could occur unexpectedly.



DOCK SHELTERS

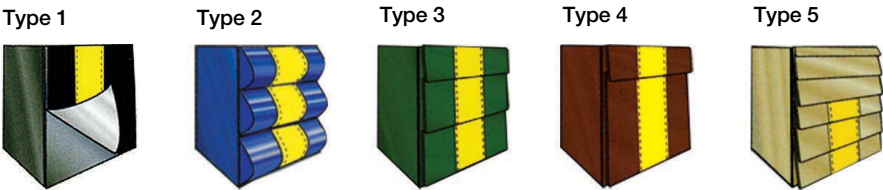
PRODUCT OVERVIEW

✓ Get A Quote Now!

General Specifications

Standard Size	11' 6" W x 11' H
Accommodations	Carries 12' to 13' 5" high
Projections	18', 24', 30' and 42'
Durability Options	22 / 40 oz Vinyl 16 / 40 oz Hypalon 16 / 40 oz Neoprene Hight-Tear Resistant
Warranty	1-year guarantee against manufacturing defects in material and workmanship from date of installation.

Optional Contact Face

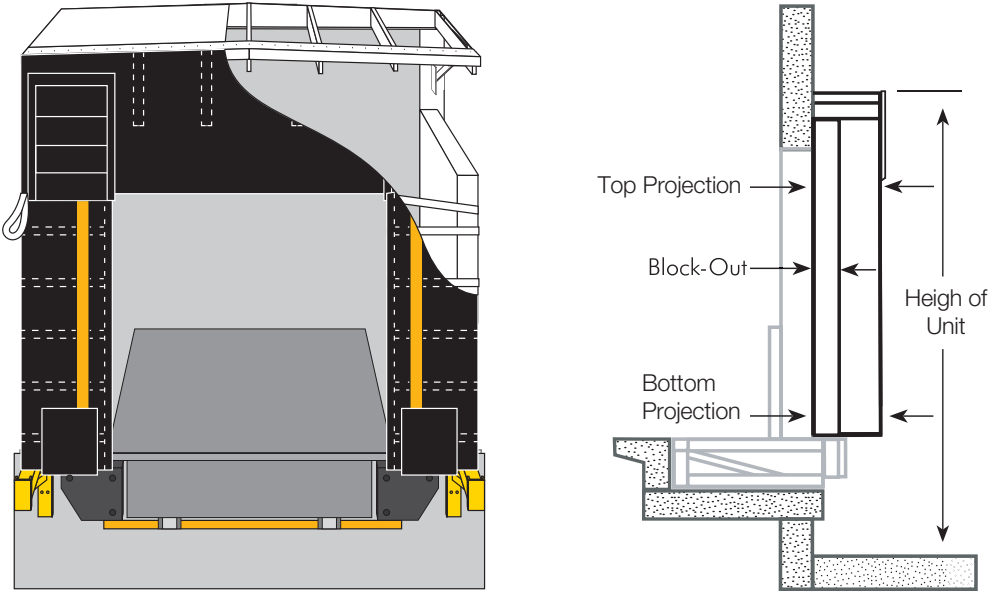


Colors

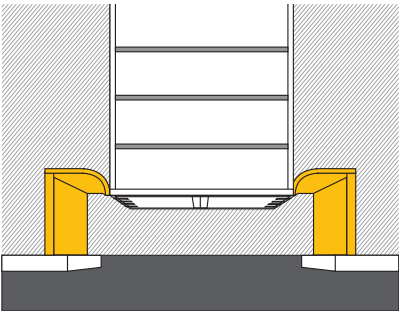
Curtain			
Black	Blue	Green	
Brown	Tan		

Guide Stripes		
Yellow	Orange	

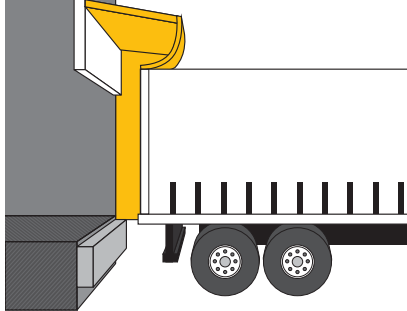
Technical Drawing



Top View



Side View



TOP SEALS

Key Features

- Galvanized Steel Frame and Sheeting
- Pressure-Treated Lumber
- Double-Layered Premium Fabric
- Foam-Filled Sweeper Pad
- Galvanized Steel Mounting Hardware

Major Benefits

- Reliable Performance:**
Combines weight with gravity to force water to run off the sides, simultaneously creating a barrier against airborne contaminants.
- Enhanced Safety:**
Top seals can be installed above new or existing dock seals, maximizing environmental safety at the loading dock.
- Low Maintenance:**
Rugged steel mounting hardware and premium-durability fabrics ensure an extended product lifecycle with little to no maintenance.



TOP SEALS

PRODUCT OVERVIEW

✓ Get A Quote Now!

General Specifications

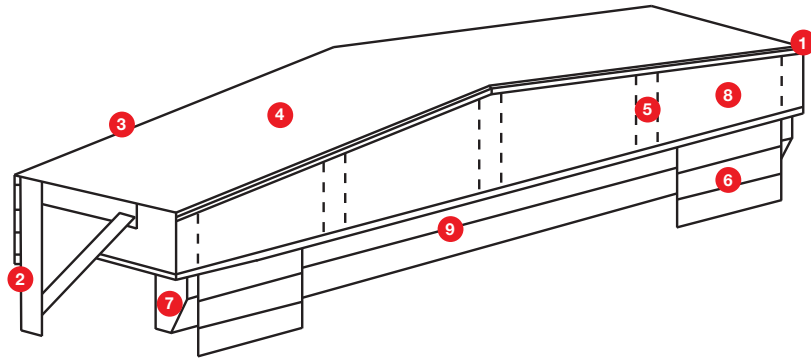
Dimensions	120" W x 24" with a 24" drop
Base fabric	40 oz. Hi-tear vinyl
Foam	Dual-density foam
Structure	Pressure-treated lumber with fiberglass sheeting to prevent fading or cracking.
Optional	<ul style="list-style-type: none">• Additional drop-in head pad• Additional widths• Snow-load options
Warranty	1-year guarantee against manufacturing defects in material and workmanship from date of installation.

Product Overview

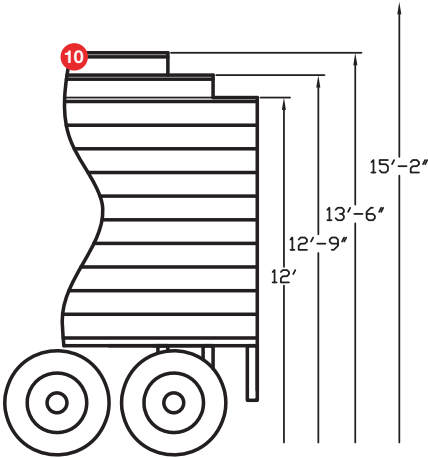


Trailer top seal automatically pushes down across the full width of the trailer top, ensuring complete protection against water entering the dock area.

Technical Drawing



- 1 Galvannized Trim Angle
- 2 Galvannized Side Support Bracket
- 3 Galvannized Steel Frame
- 4 Galvannized Sheeting
- 5 Stays
- 6 10" x 20" Wear Flaps/Pleats
- 7 Foam Filled Sweeper Pad
- 8 Storage Curtain
- 9 Double Layer of Fabric 40 oz.
- 10 High options

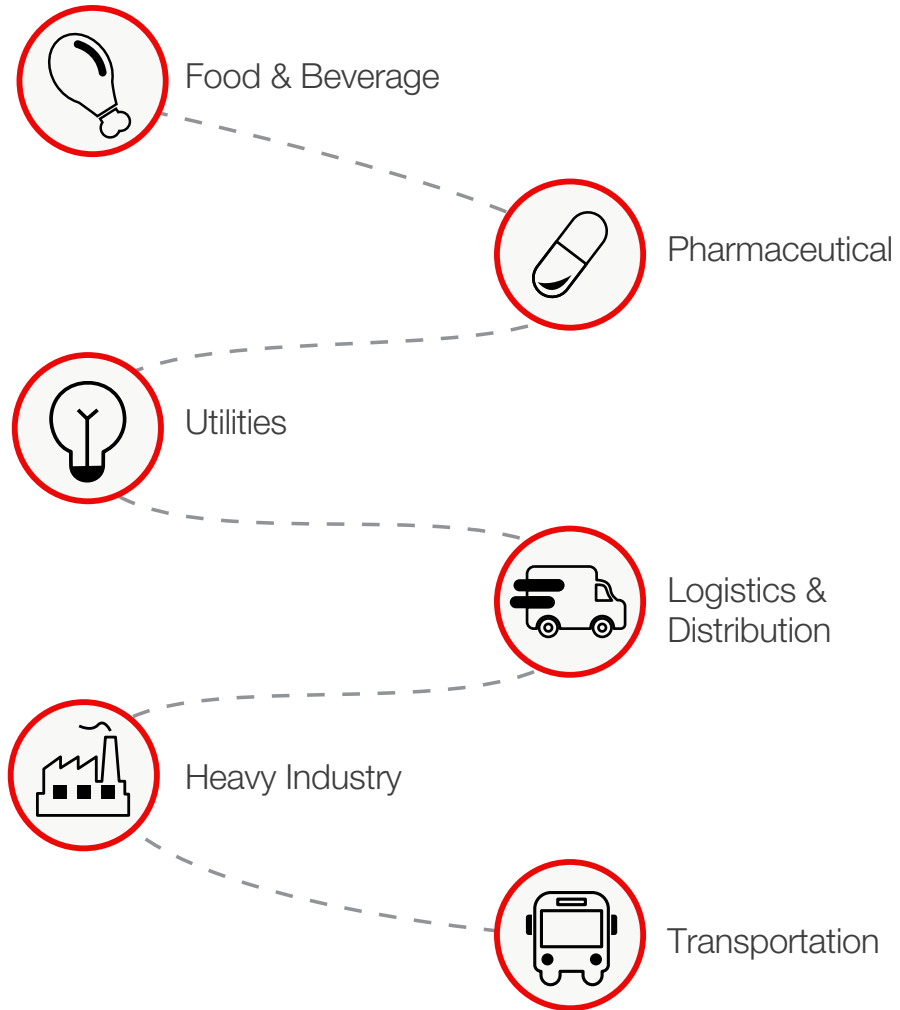


Fabric and Color Options

- 40oz Hi-Tear Vinyl
- 50oz Hi-Tear Vinyl
- 40oz Hi-Performance Hypalon

Black	Blue
Brown	Green

3.0 Keeping Your Facilities In Full-Swing



ALLMARKDOOR

All Doors. All Docks. All Service. All the Time.



Contact Us Today:

1.800.417.9995 | WWW.ALLMARKDOORS.COM